

Proposed Renewal of Richvale Branch

Richvale is RHPL's smallest facility, but an important neighbourhood-scale branch providing local services for the surrounding community. With the planned Yonge North Subway Extension and development around Richmond Hill Centre, nearby neighbourhoods, including those near Richvale Branch, will also experience growth. Today, the branch reports needing more space to meet the needs of its community.

A **second-floor addition** above the main entryway with can be used as a reading

room, a program room, or a special event space, easing pressures on existing program and storage spaces.

The **expanded front entryway** includes a **self-serve café**, additional seating, and a double-height atrium. A **front patio** and a **forest reading room** at the rear extend library spaces to the outdoors.

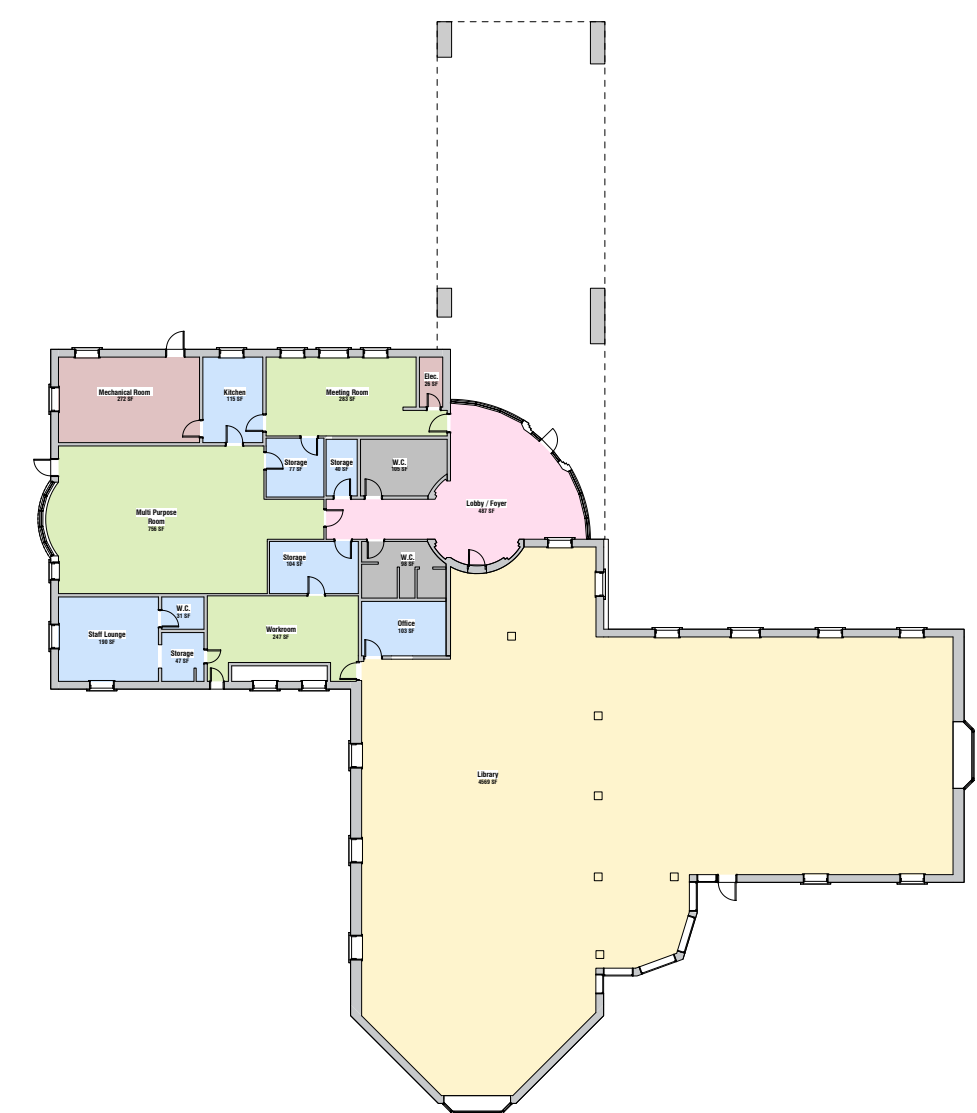
Partnerships with the neighbouring school may be explored for other outdoor opportunities, including an outdoor program area.

Proposed Site Plan



Existing Site

Existing Level 1



Proposed Level 1



Forest Reading Room



The forest reading room will be a quiet, contemplative space that will expand the library's footprint for the warmer months. It will preserve the existing mature trees and add new furnishings and planting.

Level 2 Addition



A new, contemporary addition to the second floor will create a visual focal point and wayfinding element for the branch. Additional space can be used as an informal reading room or study space with increased technology capacity. It also provides much-needed program space and could be booked by the larger community for after-hours events.

Proposed Level 2 Addition

